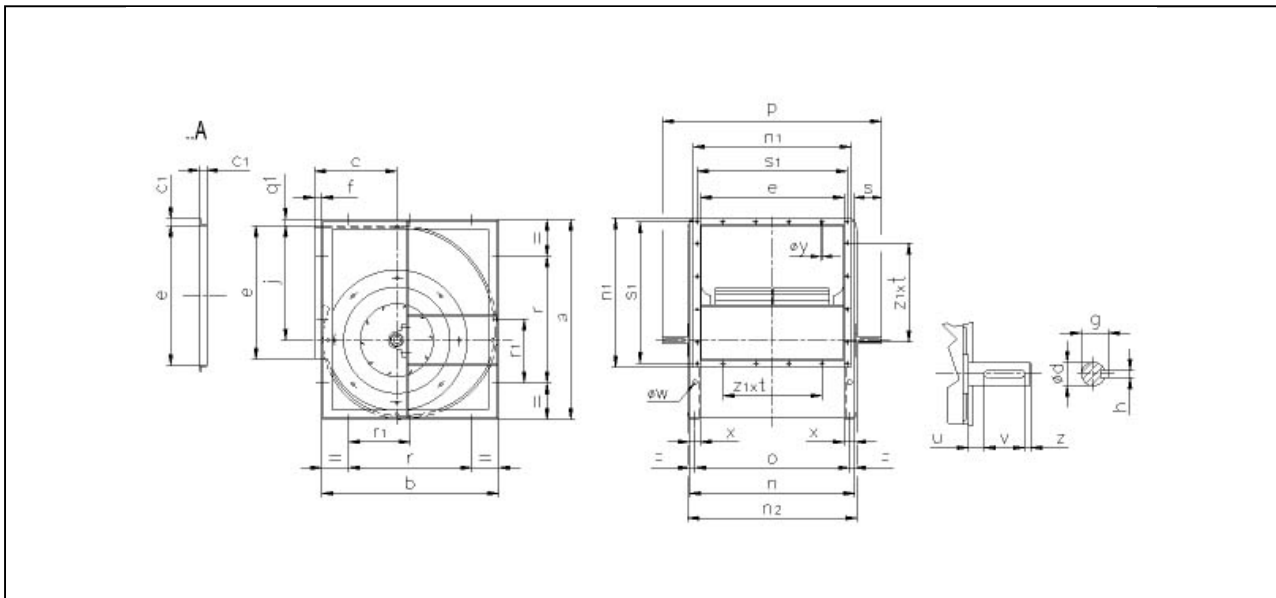
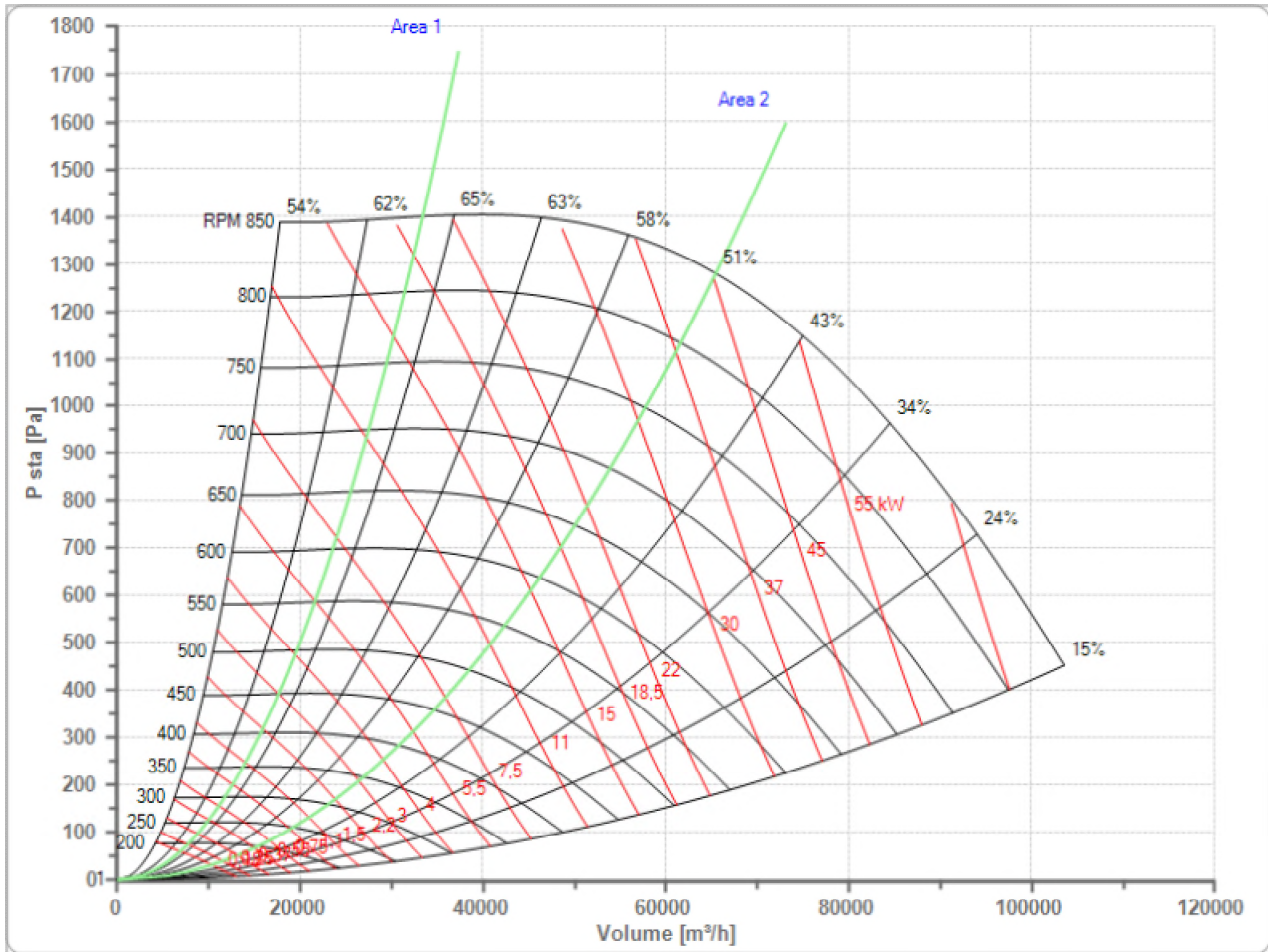


Selected Fan
n Max

TLZ 710 T
850 1/min

Fan working conditions
Pw Max

Free Inlet - Free Outlet
22.00 kW



a	b	c	c1	e	f	g	h	j	n
1304	1048	485	25	898	71	53.5	14	767	998
n1	n2	o	ød	øw	øy	p	q1	r	r1
948	1028	958	50	18	7.5	1260	6	630	315
s	s1	u	v	x	z	z1			
131	928	23	80	50	10	9x90			