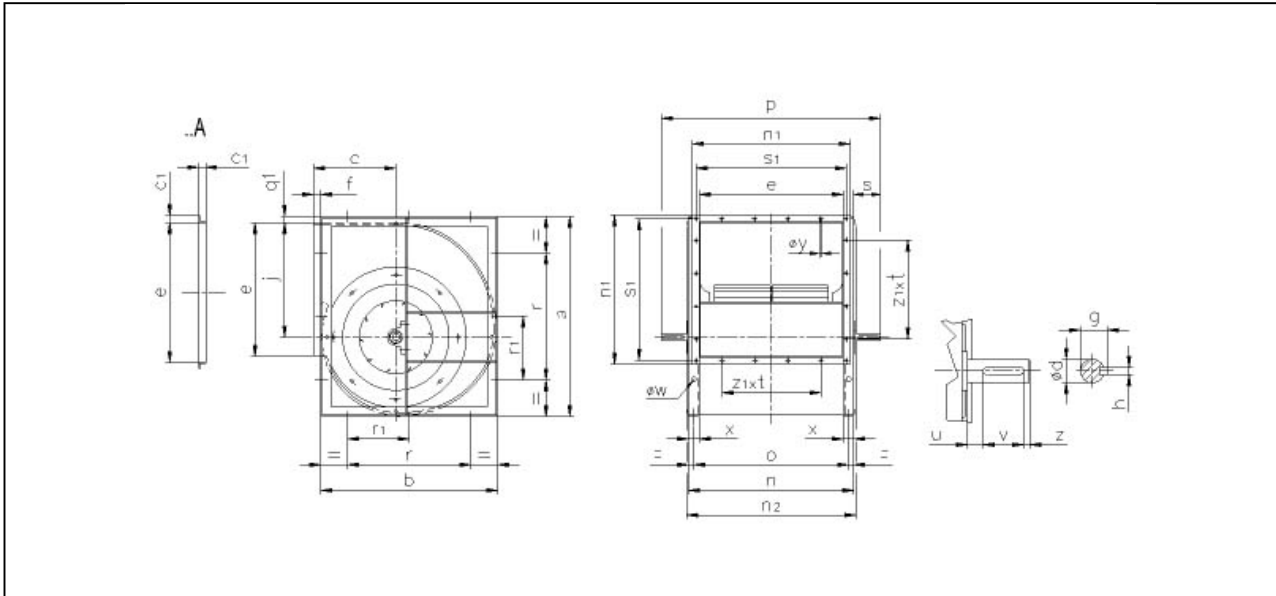
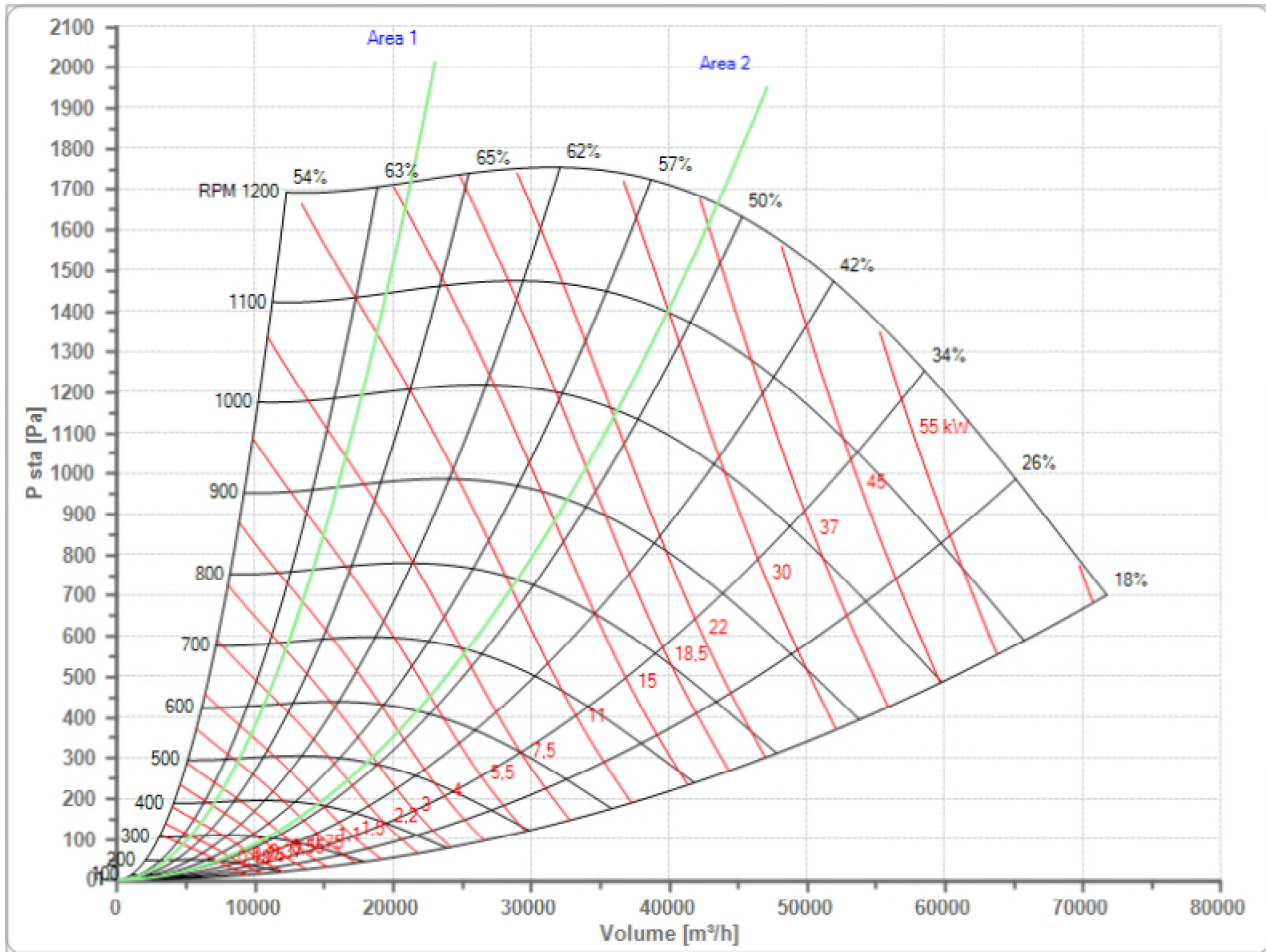


Selected Fan  
n Max

**TLZ 560 T**  
**1200 1/min**

Fan working conditions  
Pw Max

**Free Inlet - Free Outlet**  
**13.50 kW**



a	b	c	c1	e	f	g	h	j	n
1030	838	390	25	715	54	43	12	606	815
n1	n2	o	ød	øw	øy	p	q1	r	r1
765	825	765	40	15	7.5	1028	6	500	250
s	s1	u	v	x	z	z1xt			
107	745	14	70	50	10	7x90			