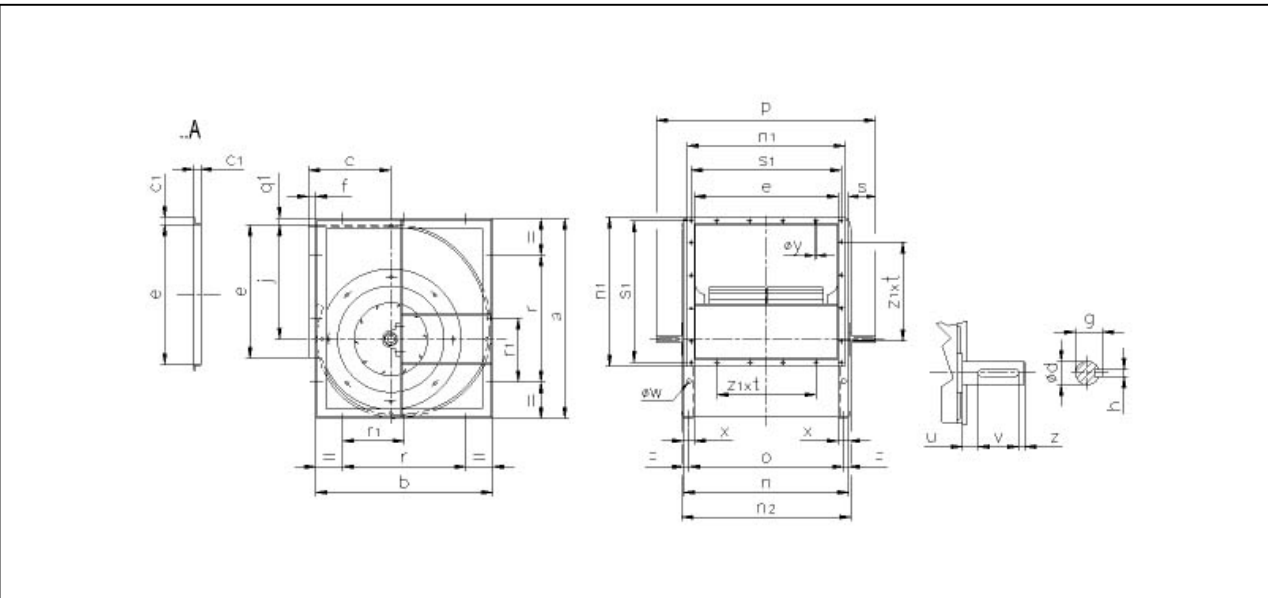
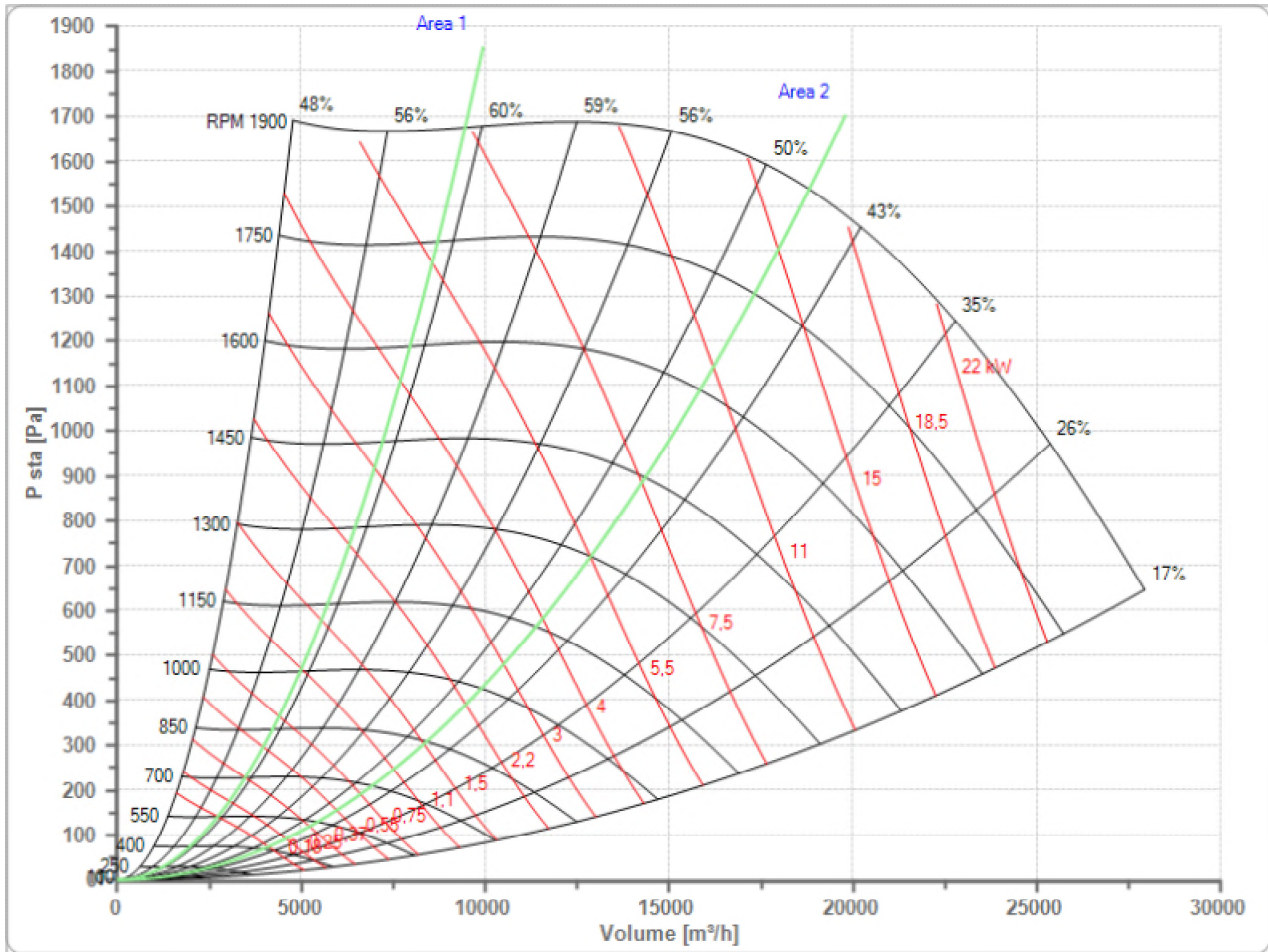


Selected Fan
n Max

TLZ 355 T
1900 1/min

Fan working conditions
Pw Max

Free Inlet - Free Outlet
9.00 kW



a	b	c	c1	e	f	g	h	j	n
655	542	261	25	453	39	33	8	384	533
n1	n2	o	ød	øw	øy	p	q1	r	r1
503	541	493	30	10	7.5	709	5	355	-
s	s1	u	v	x	z	z1xt			
88	483	27	40	40	10	4x90			